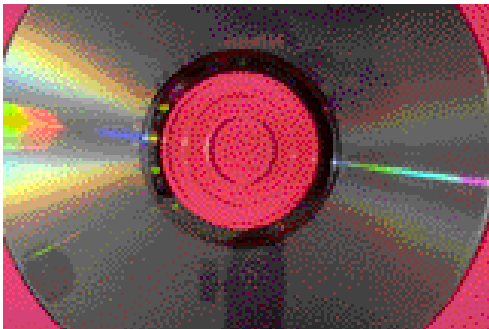




Web-based Document Imaging, Storage & Retrieval

- Scan, store, and retrieve patient charts securely over your Intranet
- Scan from multiple locations simultaneously
- Provide immediate access to patient records while reducing filing and storage costs
- HIPAA compliant patient record system
- Index patient charts to existing MPI records



SCANSAFE High-Speed Image Archive and Retrieval, Cross-Platform Imaging System

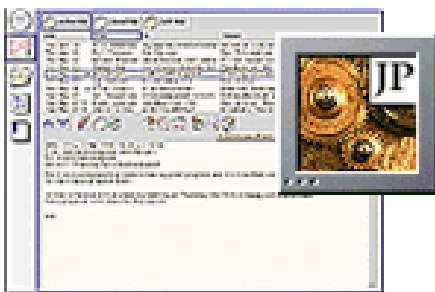
With over 50 installations and more than 30 years of combined image system engineering work, the SCANSAFE document imaging system has proven to be secure, reliable, and a favorite high-performance image system for a wide-variety of image applications. SCANSAFE is a desktop computer driven document management system that meets the specific needs of high volume, secure document archiving. It scans paper documents to create digital images, indexes documents, distributes them electronically and sustains an open-standard, long-term archive. Users can retrieve documents from web Browsers like Netscape Navigator, or Internet Explorer, or high performance dedicated retrieve clients like the SCANSAFE Retrieve Station. SCANSAFE can store images on optical disk cartridges such as WORM, MO, Phase Change, DVE, CD-R as well as magnetic disk and tape.

SCANSAFE will consistently and reliably archive more pages per hour than any other imaging system near its price range. This is accomplished by custom engineering software to optimize hardware performance without unneeded features that hinders performance. The operator of the system focuses on what he or she wants to do with a simple user interface, while the system runs the scanning, document quality assurance, indexing, compression, and storage at blazing speeds.

SCANSAFE systems are easily expanded to include options such as an imprinter, OCR text searching, database interfaces, and CAR emulation. Since all images are stored in an open-standard TIFF format, future expansion is assured.

ScanSafe Key Features:

Easy To Use	New operators on the SCANSAFE system require as little as fifteen minutes of training and no keyboard skills to perform production quantity document scanning
Fast	SCANSAFE will continuously process 3,300 pages per hour, faster than competing systems costing four times as much
Imprinting	Any text or numeric data can be imprinted (endorsed) onto the paper as it is scanned
Standards compliant	Our Imaging systems adhere to industry standards
Internet/Intranet	SCANSAFE supports the World Wide Web standards ftp and HTTP for all compatible interface functions
Cross platform	We routinely connect to third party programs running on UNIX, VMS and other mainframe or client-server computers
OCR text search	Search for a word to find a specific page in a long document
Unlimited capacity	SCANSAFE images are stored on any digital media, including removable CDs, CD towers, DVD, optical disks, jukeboxes, tapes and hard disks. There is no limit to the number of CDs or other optical disks you can archive with SCANSAFE
Document additions	SCANSAFE has special functions for archiving late additions that must be attached to an existing document
Upgradeable	SCANSAFE can easily be upgraded with custom features to meet your exact requirements
Database Connections	SCANSAFE can image enable new or existing database systems through our open-standards based connectivity. SCANSAFE has routinely been connected to mainframe systems, SQL, and standard relational databases such as Access, and FoxPro



Java ViewTIFF - Browser Client

Java ViewTIFF Applet Specification

The ViewTIFF applet is used for viewing black and white, and gray scale SCANSAFE image documents. The applet supports TIFF decompression, display,

zoom, rotate, scale to gray, black & white view, and printing to the OpenWeb server Que. To speed the viewing process, the ViewTIFF applet decompresses the image on the fly while transmitting the remainder of the file to decrease total viewing time. The ViewTIFF applet retrieves images from the I3 server through a specified set of parameters that include the image medical record number and location of the image. To retrieve images, computers are required to have the ViewTIFF plug-in loaded that enables a "secure" connection to the server, preventing others on the network from Browsing images. Further security features on the server include user authentication, and user logs for tracking use of the system and image documents.

Browser Support

Java ViewTIFF works with Netscape 3.01 and above on Windows NT/95, Mac and UNIX. Java ViewTIFF also works with Internet Explorer 3.0 and above on Windows NT/95 and Mac.

Features

Zoom	Enlarge or reduce the image size, or zoom to fit image area on Netscape page. Zoom level is governed by enlarge/reduce controls and Zoom menu. The mouse-click point is the center for the new image view. Zoom settings (percentages are for a 200 dpi image) are: 200%, 150% 100%, 80%, 50%, 40% or zoom to fit applet image area.
Rotate	90, 180, 270 degrees (at any zoom factor)
Scale to gray	Enable/disable.
Page Control	Forward/back and goto page. Using separate files ending in page numbers for each page or multi-page TIFF in a single file. Selecting a file name to view a different image.
File Formats	CCITT Group 4 CCITT Group 3 1-D TIFF Mode 2 (a variation of CCITT Group 3) Both Intel 'II' and Motorola 'MM' style byte ordering in the header are supported. Bit ordering with the image data from high bit to low bit (TIFF Standard) is recommended. The TIFF Spec does provide a FillOrder tag for reverse bit ordering but recommends not using reverse bit ordering or the tag. ViewTIFF does support this feature, but other TIFF viewers may not, so deploy with caution.

Creative Change: Making bold Internet visions a reality

Creative Change is in the forefront of helping hospitals develop a dynamic online presence. Founded in 1993 as an IT company, Creative Change has evolved into a full-fledged Internet Solutions company, taking projects from inception through to concrete results, with each project customized to the hospital's unique requirements.

From system design and development to installation, training and support to hosting for Intranet and Internet sites, Creative Change can take your health care organization to the next level.

For more information or a customized proposal for your application, call:

Scott McRae, President
Creative Change, Inc.
30 Hebron Ave. 2nd floor
Glastonbury, CT 06033
(860) 659-3800 x10
(860) 659-3818 Fax
scott@cchange.com
www.cchange.com